



Elite Active Clad Alignment fusion splicer

T-502S

Powered by



NanoTune™
Enhanced splice experience



SumiCloud™



Everything in one hand



Compact and light
1.1kg



Reduce work time
Splicing 6s
Heating 12s



Reactive touch screen



Splice Data
Utilization

Versatile solution

01 Hassle free preparation

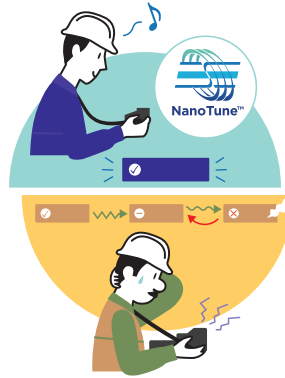


T-502 and new working tray get your job done quicker

Open and splice ergonomic design



02 Enhanced splice experience



NanoTune™ executes high precision splices

03 Simplified splice management



SumiCloud makes work easier and helps maintain your splicer

Specifications

Items	T-502S	
Optical fiber requirements	Material	Silica glass
	Fiber count / Profile types	Single / SMF(G.652), MMF(G.651), DSF(G.653), NZDSF(G.655), BIF(G.657)
	Fiber diameter	Cladding diameter : 125 μm, Coating diameter : 250μm to 3mm by multi clamp
	Cleave length	5 to 16mm for single fiber, 8mm for drop cable
Standard performance	Splice loss (typical)*1	SMF : 0.03dB, MMF : 0.01dB, DSF : 0.05dB, NZDSF : 0.05dB
	Return loss (typical)	60dB or greater
	Splice time (typical)	6sec (SM G652 Quick Mode)
	Heating time (typical)	12sec (FPS-61-2.6 sleeve, S60mm 0.25 Quick Mode)
	Splice & Heat cycles per battery full charge*2	Approx. 250 (BU-17)
	Fiber view & magnification	2 CMOS cameras observation, 180X (zoom : 370X) for X or Y single axis view
	Proof test	1.96 - 2.09N
	Applicable protection sleeve	60mm, 40mm & Sumitomo Nano sleeves
Programs	Splice programs	Max. 300, 18 are pre-optimised, 282 editable by user
	Heating programs	Max. 100, 27 are pre-optimised, 73 editable by user
Functions	Splice image capture / Splice data storage	200 images/10,000 splice data (internal memory only) 50,200/20,000 (With 16GB SD card)
	Multi clamp	Applicable for 250 & 900μm coated fiber, 900μm loose buffer fiber, 2 & 3mm jacket cord and rectangular drop cable
	Heater clamp for splice on connector	Provided
	Auto-start	Splice/Heating
	Automatic fiber identification	SMF / MMF
	Automatic arc calibration	Automatically compensates for environmental condition changes
	Core loss estimation	Provided, HCA: Hot Core Analyzing
Size / Weight	Size	126(W) x 154(D) x 83(H) mm (without protrusion)
	Weight	0.9kg (without Battery), 1.1kg (with Battery BU-17)
Terminals	USB port	USB 2.0 (mini-B type)
	Storage media	SD / SDHC memory card Max32GB
Power supply	AC input	AC 100 - 240V, 50/60Hz (ADC-15)
	DC input	DC 10 - 15V
	Battery pack	Li-ion 10.8V, 4,560mAh (BU-17)
Operation condition		Altitude : 0 - 5,000m, Temperature : -10 - +50°C, Humidity : 0 - 95%RH (non-condensing), Wind velocity : up to 15m/sec
Storage condition		Temperature : -40 - +80°C, Humidity : 0 - 95%RH (non-condensing), Battery : -20 - +30°C (long term)
Electrode life *4		6,000 arc discharges
Software updates		Internet
Data management		Can be stored, edited and analyzed by dedicated PC software

*1 : Average value of the final inspection in room temperature with Sumitomo identical fibre. Measured by cut-back method relevant to ITU-T and IEC standards.

*2 : Splice & Heat cycles may vary depending on the battery status and the operating environment.

*3 : Wireless LAN connectivity is not available in all countries. For more details, please refer to our Web site. <https://global-sei.com/sumitomo-electric-splicers/products/sumicloud/>

*4 : Achieved in lab condition. Electrode life may vary depending on the operating environment.

Environmental Durability*

Test details	
Shock resistance	Drop from 76cm on 5 faces (excluding top face)
Rain resistance	Equivalent IPx2
Dust resistance	Equivalent IP5X

*Splicer operation after shock, impact, water or dust tests, was confirmed under battery power, by Sumitomo. Does not guarantee the product will not be damaged by these conditions.

Standard Kit Contents

Part name	Part No.	Qty.	Part name	Part No.	Qty.
AC adapter	ADC-15	1pc	Carrying case	CC-17	1pc
AC power cord	PC-AC<'>2P	1pc	Workig tray	WT-17	1pc
Battery pack	BU-17	1pc	Shoulder belt	—	1pc
Spare electrode	ER-17	1pair	USB cable	—	1pc
Quick reference guide	—	1pc			

*X=2(USA), 3(EU), 4(JP), 5(UK), 6(AUS), 7(South Africa)

Items listed in Standard Kit Contents are always included with the splicer body. Overall kit content may vary regionally. Please check with your local authorised reseller to confirm kit content in your region.

Optional Accessories

	Part name	Part No.	Remarks
Accessories for Splicer	SumiCloud card	WLSD series	For SumiCloud™ connection
	Fiber holder	FHS-025/LB5 FHS-SOX	For 0.9mm loose buffered single fiber Connector holder
	Transfer clamp	CLP-201	Transferring drop cable on working tray
	Battery pack	BU-17	Li-ion 10.8V, 4,560mAh
	Battery charger	BC-17	For BU-17
	Car battery cable	PC-V25	For car battery operation (cigarette socket type)
	V-groove cleaning brush	VGT-2	Brush for cleaning V-groove
	Electrode	ER-17	—
	Cooling tray	FCT-17	—
	Fiber cleaver	FC-6S-C FC-6RS-C FC-8R-FC	Table-top high precision cleaver Automatic blade rotation cleaver Automatic blade rotation cleaver with counter
Accessories	Hand held fiber cleaver	FC-8R-F	Automatic blade rotation cleaver (without counter)
	Jacket remover	JR-M03	Jacket remover for single fiber
	Lose tube cutter	LTC-01	—
	Alcohol dispenser	ASB-17	—
	Fiber protection sleeve	FPS-1 FPS-40 FPS-61-2.6	60mm, diameter after shrink approx. 3.2mm 40mm, diameter after shrink approx. 3.2mm 61 mm, diameter after shrink approx. 2.6mm

Sumitomo Electric Industries, Ltd.

■ Specifications are subject to change without prior notice.

Designed in Japan
502S01-GLOB-EN001(2021.01)
(TP)